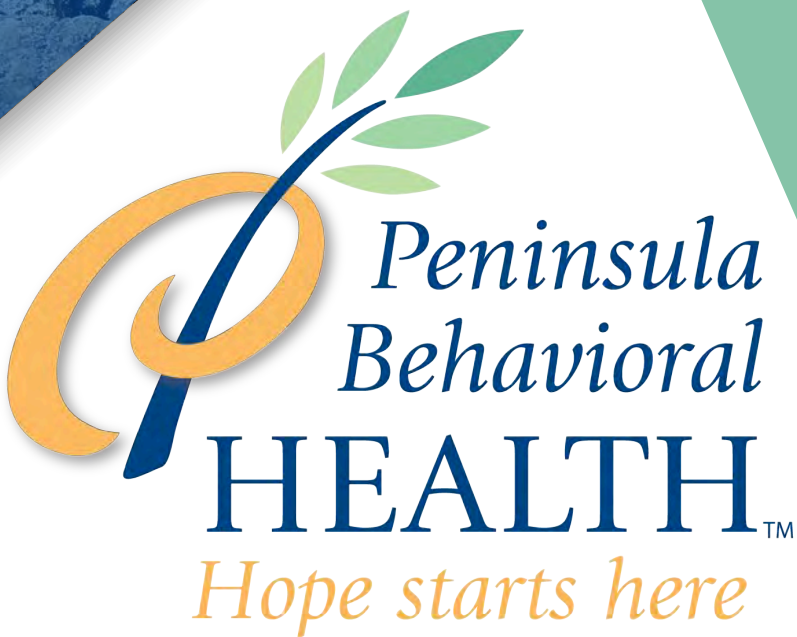


# 2024

---

# Annual REPORT





# Table of Contents



## Our Mission

To provide quality comprehensive behavioral health services to the residents of our community.



## Our Vision

To support the development of a healthy, caring, and safe community while responding to its evolving needs.

---

Letter From Our CEO **3**

---

Board of Directors **4**

---

Meet Our Leadership **5**

---

2024 Financial Report **6**

---

Funding Raised Through United Way **7**

---

Community Impact **8**

---

Summary of Services **9**

---

Amplifying Impact **10-11**

---

2024 Annual Donors **12-13**

---

North View Project **14**

---

New Journeys Program **15**

---

2024 Gala Highlights **16**

---

2025 Annual Gala **17**

---

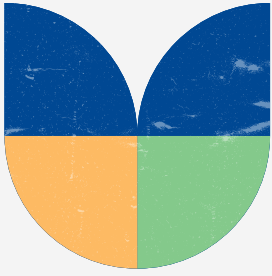
2025 Gala Sponsorship **18**

---

Show Your Support **19**

---





# Letter From Our CEO

As I reflect on the past year, I am filled with pride and deep gratitude for the remarkable strides we have made in advancing our mission to provide compassionate, comprehensive behavioral health services to our community. Your unwavering support has been the foundation of our success, enabling us to change lives and build a stronger, more resilient community.

This year has been particularly transformative for our housing initiatives. Housing is not just a place to live—it is a cornerstone of recovery, stability, and dignity. Thanks to your generosity, we are celebrating the success of **Dawn View Court Apartments**, which opened in 2023 and has already provided secure, supportive homes to many individuals. This project has been a beacon of hope, creating a nurturing environment where residents can thrive and regain their sense of community and independence.

In October 2024, we proudly opened **Sequim House**, a new transitional supportive housing program. Designed to help individuals transition from crisis to stability, Sequim House provides not only a safe place to stay but also the resources and guidance necessary to build a brighter future. This program is already making a significant difference in the lives of its residents.

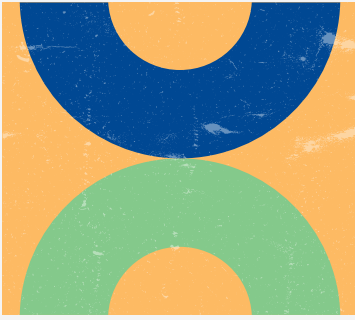
Looking ahead, we are thrilled to announce the **North View** project, an ambitious and much-needed development. We marked this milestone with a Groundbreaking Ceremony in December 2024. When completed, North View will offer 36 units of Permanent Supportive Housing, providing long-term solutions for individuals facing homelessness and mental health challenges. This project represents our unwavering commitment to addressing these critical issues with compassion and innovation.

None of these milestones would be possible without our incredible team. I am deeply thankful for the dedication and compassion of everyone who contributes to our mission. From those providing direct support to individuals and families, to those working behind the scenes to ensure everything runs smoothly, every role is vital in transforming lives. Your tireless efforts in meeting urgent community needs and ensuring the success of our operations are truly appreciated.

To our donors, partners, and advocates—thank you for your continued generosity, trust, and belief in our work. Your support empowers us to expand our services, explore new solutions, and dream bigger for the people we serve. Together, we are building a community where everyone has the opportunity to heal, grow, and thrive. With your partnership, the future is bright, and our collective impact will only continue to grow.

**- Wendy Sisk, CEO Peninsula Behavioral Health**





# Board of Directors

We are fortunate to be guided by a dedicated and visionary Board of Directors, whose commitment drives our efforts to address the complex challenges of mental health, substance use, and housing in our community. Each member brings a unique blend of expertise, passion, and perspective, ensuring that Peninsula Behavioral Health continues to serve as a beacon of hope and support for those in need.

Our Board of Directors plays a pivotal role in advancing our mission to deliver accessible, comprehensive behavioral healthcare. Through their strategic leadership, sound financial oversight, community advocacy, and unwavering dedication to ethical governance, they help strengthen Peninsula Behavioral Health as a vital resource for our community. Their commitment underscores a shared belief that every individual deserves the opportunity to heal, thrive, and find hope.



**David Arand**  
*President*



**Tom O'Donnell**  
*Vice President*



**Mike Hill**  
*Treasurer*



**Desi Larson**  
*Secretary*



**Elizabeth Christian**



**Vicki Lowe**

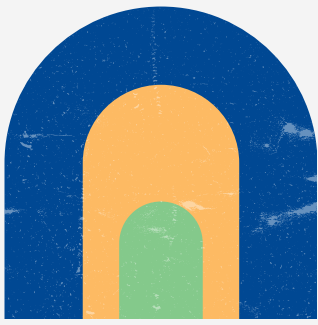


**March Picker**



**Kyle Henderson**





# Meet Our Leadership

Our Leadership Team is acutely aware of the urgent challenges posed by mental health, substance use, and housing crises in our community. We recognize that these issues are deeply interconnected and require a holistic, compassionate approach to effectively address them. Through strategic planning, collaborative efforts, and a deep commitment to understanding the unique needs of those we serve, we strive to build a comprehensive support system. This system fosters mental well-being, empowers individuals to overcome substance use disorders, and promotes stable, secure housing. Our leaders are guiding the organization toward a future where compassionate care becomes a tangible reality for all.



**Wendy Sisk**  
*Chief Executive Officer*

“Our job is to provide hope and be able to walk beside people through some of the most difficult points in their lives.”



**Dawn Brown**  
*Chief Finance Officer*



**Joseph Reis**  
*Chief Medical Officer*



**Kathy Stevens**  
*Chief Operations Officer*



**Tracy Sheldon**  
*Development Director*



**Ashley Freeman**  
*Financial Controller*



**Anita Mauger**  
*Human Resources Director*



**Angie Berglund**  
*Director of Intensive Services*

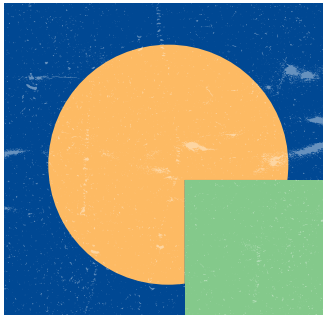


**Matt Pressley**  
*Information Technology Director*



**Sydney Upham Soelter**  
*Director of Quality and Compliance*

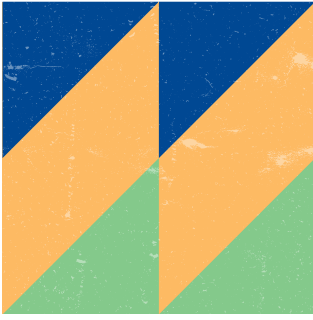




# 2024 Financial Report

Statement of Activities	2024	2023	2022
<b>Revenue</b>	<i>As of 6/30/24</i>	<i>As of 6/30/23</i>	<i>As of 6/30/22</i>
Public Support	\$15,593,410	\$15,392,340	\$18,451,826
Patient Service Revenue	\$780,158	\$565,255	\$236,216
Rental and Other Income	\$469,310	\$348,745	\$174,320
<b>Total Revenue</b>	<b>\$16,842,878</b>	<b>\$16,306,340</b>	<b>\$18,862,362</b>
<b>Expenses</b>	<i>As of 6/30/24</i>	<i>As of 6/30/23</i>	<i>As of 6/30/22</i>
Salaries and Benefits	\$12,752,164	\$12,513,391	\$11,635,184
Supply and Other Expenses	\$1,913,873	\$1,814,614	\$1,360,517
Administrative	\$370,674	\$263,648	\$849,700
Occupancy	\$481,411	\$476,094	\$602,332
Depreciation and Amortization	\$680,808	\$589,827	\$505,703
Interest	\$141,857	\$127,802	\$74,459
<b>Total Expenses</b>	<b>\$16,340,787</b>	<b>\$15,785,376</b>	<b>\$15,047,895</b>
<b>Excess of Revenues Over Expenses</b>	<b>\$502,091</b>	<b>\$520,964</b>	<b>\$3,814,467*</b>

\* Excess revenues are a result of capital grants/investments in Dawn View Court and ERTC tax credit receivable.



# Funds Raised Through United Way

## United Way Community Donors and Peninsula Behavioral Staff raised over \$11K for Peninsula Behavioral Health in 2024!

\*Anonymous donations (10)  
Yaoying Aichele  
Beth Anderson  
Roberta Anderson  
George Bartsch  
Amy Bell  
Angie Berglund  
Merri Bevans  
Linda Boardman  
Nancy Bowman  
Dawn Brown  
Christine Burnell  
Judith Carlson  
Christina Chadick  
Hilary Clark  
Kelly Cook  
Kathleen Davis  
Nicole DeMatties  
Danielle DeOlivera  
Meg DePew  
Sam Farnum

Paige Foth  
Debbie Fredson  
Jessica Freeze  
Kathy Hansen  
Elise V. Hoffman-Taus  
Lindsay Hopper  
Timi Iddings  
Shelley Johnson  
James Jones  
Patty Jordan  
Chelle Kaser  
Janie and Ken Leuthold  
Richard Manning  
Sarah Marella  
Anita Mauger  
Lori McLaughlin  
Karin Memmer  
AJ Miller  
Kyle Nervik  
Wendy Olsen  
Dawn O'Neil

Pearl Pallister  
Julie Pearce  
Sarah Perry  
Dan Pottiger  
Matthew Pressley  
Andrew Reiners  
Joseph Reis  
Samantha Rodahl  
Janno Scheer  
Amy Scott  
Wendy Sisk  
Mark Stefanovic  
Kathy Stevens  
Mandi Stratford  
Jeff Tucker  
Sydney Upham-Soelter  
Todd Weeks  
Michael Wiley  
Don R. and Geri G. Zanon  
Rosario Zenobi  
Wes Zimmer

## LAND ACKNOWLEDGEMENT



Mask Carver: Dusty Humphries, Jamestown S'Klallam Tribal Citizen  
Photo Credit: Loni Greninger, Jamestown S'Klallam Tribal Citizen

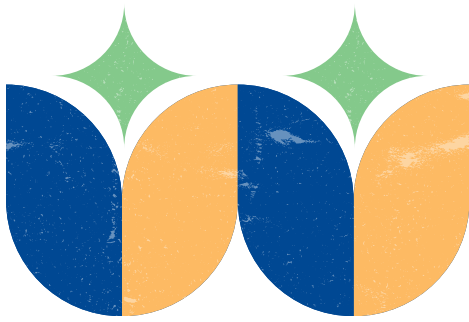
We would like to acknowledge the history of the land we are privileged to operate on. Clallam County is within the traditional territories of the Quileute, Makah, Lower Elwha Klallam, Jamestown S'Klallam, and Port Gamble S'Klallam. Further, the cities of Port Angeles and Sequim are located within the traditional territory of the S'Klallams/Klallams. These tribes have stewarded the lands and their peoples since time immemorial.

We are committed to ongoing learning, understanding, and collaboration. We recognize the importance of honoring and respecting Indigenous perspectives in our services and programs.



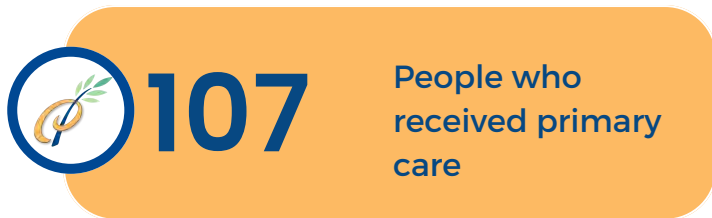
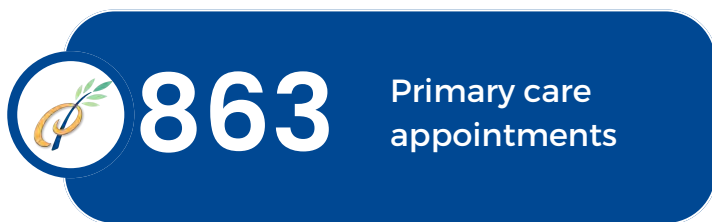
***PBH adopted our Land Acknowledgement honoring the enduring connection of Native American tribes to their ancestral lands in 2024.***

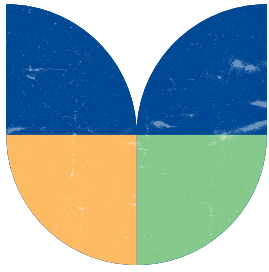




# Community Impact

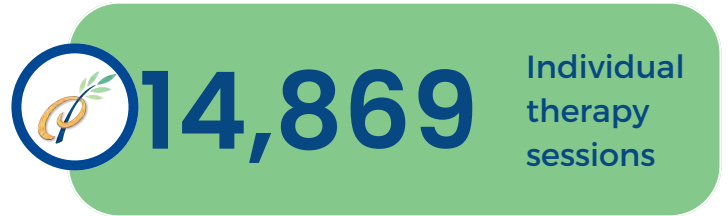
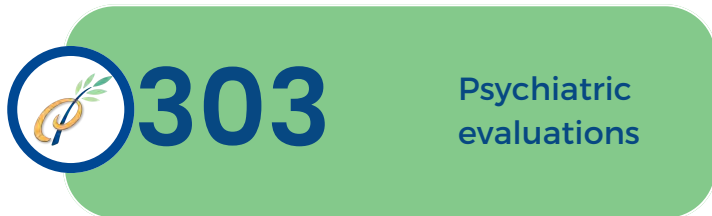
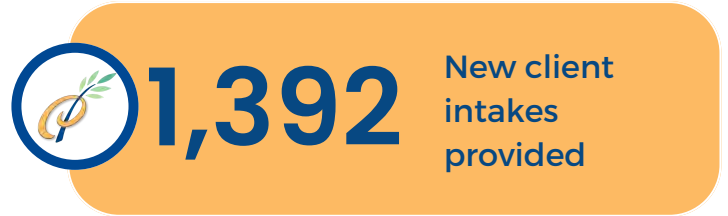
By addressing critical mental health and substance use needs, Peninsula Behavioral Health is able to transform client outcomes and build a stronger, healthier, and more connected communities in Port Angeles and Sequim. We foster a culture of resilience and inclusion by addressing the root causes of behavioral health challenges.





# Summary of Services

We provide comprehensive behavioral health services, including counseling, crisis intervention, and support for mental health and substance use recovery.

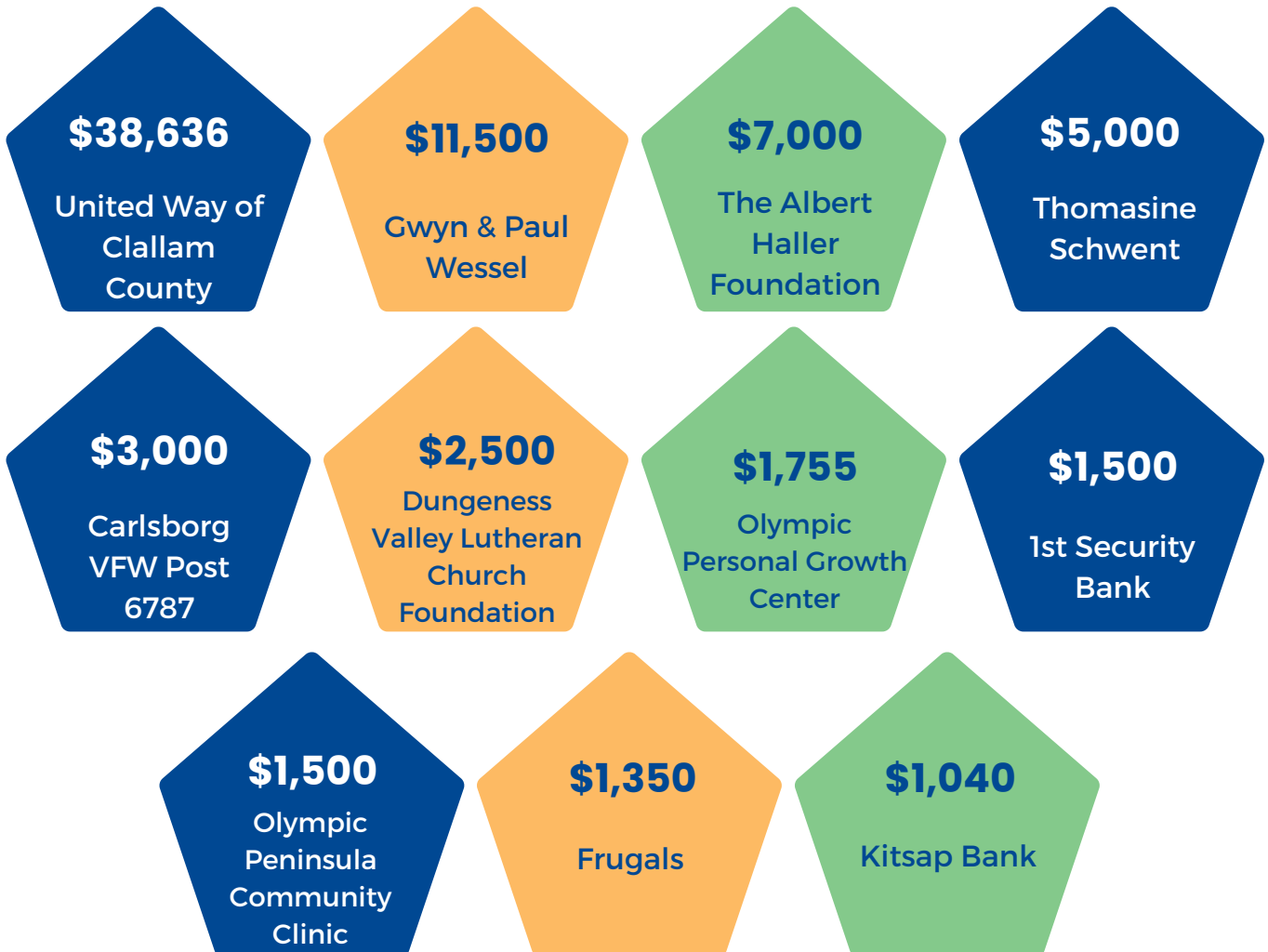


Peninsula Behavioral Health is reducing barriers to access to care by combining behavioral and physical health care.



# Amplifying Impact

Through strategic efforts, we are working tirelessly to leverage additional resources, allowing us to stretch each donation further and optimize our ability to serve those in need of behavioral healthcare. By actively pursuing grants and fostering partnerships within the community, we aim to augment our financial resources, enabling us to amplify our impact. Your support is not only sustaining our existing projects but is also facilitating the exploration of new avenues and approaches to better meet the diverse needs of individuals seeking behavioral health support.



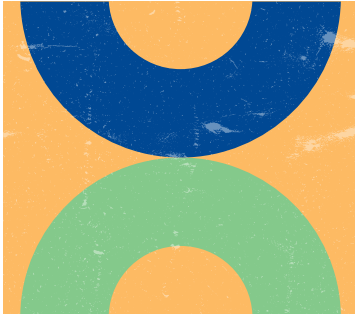




# Amplifying Impact - North View Project

Through strategic efforts, we are working tirelessly to leverage additional resources, allowing us to stretch each donation further and optimize our ability to serve those in need of Permanent Supportive Housing.





# 2024 Annual Donors

As 2024 draws to a close, we want to express our deepest gratitude for your unwavering support of Peninsula Behavioral Health. This year has been one of growth, resilience, and hope, and none of it would have been possible without your generosity. Your contributions have helped us expand our programs, reach more individuals in need, and provide life-changing services to those facing mental health and substance use challenges.

**Thank you** for believing in our mission and for standing with us as we work toward a healthier, more compassionate community. Together, we are changing lives and building a brighter future for all.

## **\$11,500**

Gwyn and Paul Wessel

## **\$5,000**

Thomasine Schwent

## **\$3,000**

Karla Strutzel

## **\$2,000-\$2,999**

Dawn Brown  
Jen Gouge  
Alda Siebrands

## **\$1,001 - \$1,999**

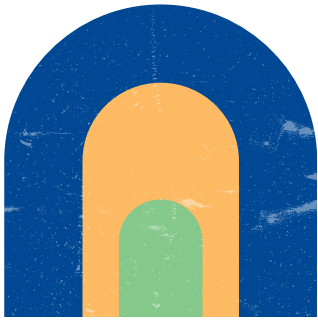
Kathy and Rob Craven  
Jonathan Freezer  
Mike French  
Carol and Randy Johnson  
Vicki Lowe  
Christina and Rick Miko  
Maura and Roger Oakes  
Dean and Deb Reed  
Joe Reis  
Roderic and Wendy Sisk

## **\$501 to \$1000**

Suzanne Ames  
David Arand  
Norman Bernahl  
Elizabeth Bowman  
Teresa Buckland  
Christine Burnell  
Buddy and Meg Depew  
Julie Hatch  
Ed and Phyllis Hopfner  
Brian King  
Anita and Jeff Mauger  
Colleen McAleer  
Grant and Karen Munro  
Tom O'Donnell  
Amy Scott  
Catherine Sisk  
Steve Tharinger  
Sydney Upham Soelter  
John and Mary Wegmann  
Steve Zenovic

## **\$251 to \$500**

Terry Anderson  
Jacqueline Bain  
Angie Berglund  
Linda Boardman  
Mark and Nancy Bowman  
Elizabeth Brummerhop  
David and Elizabeth Christian  
Deandra Cowden  
Suzanne DeBey  
Danielle DeOliveira  
Kate Dexter  
Emily Dexter  
Kathy Downer  
Frank Finney  
Jean and Ricardo Fleischfresser  
Amanda Hill  
Michael Hill  
Cyndi Hueth  
Timi Iddings  
Anne Koomen  
David and Sarah Lewis  
Susan MacDonald



# 2024 Annual Donors

## **\$251 to \$500**

Jennifer Malocha  
 John Manso  
 Karry and Michael McGuire  
 Brett Meier  
 Natasha Meyers  
 Amy Miller  
 Louisa Monger  
 Nicole Moreira  
 Edna Petersen  
 Eric Pickens  
 Jon and March Picker  
 Samantha Rodahl  
 Jeffery Ryan  
 Tracy Smith  
 Gretchen Souza  
 Chris & Kathy Stevens  
 Cally Tauran  
 Ginger Villella  
 Tierra Wessel  
 Colin Willson  
 Daniel Wolfe

## **Up to \$250**

Amanda Bacon  
 Gregory Bains  
 Cara Barnett  
 Merri Bevans  
 Evelyn Boyd  
 Ashley Buonpane  
 Maxine Ceraolo  
 Carollynn Chipman  
 Brigid Counts  
 Tim Dalton  
 Heather Davidson  
 Darcy Deyling

## **Up to \$250**

Jennifer Dudley  
 Jessica Egnew  
 Heath Foxlee  
 Debbie Fredson  
 Jessica Freeze  
 George Galasso  
 Lory Garrett  
 Regina Gilstrom  
 Janet Gray  
 Kathy Hansen  
 Ann Marie Henninger  
 Susanne and William Herrick  
 Lori Holcomb  
 Kyra and Steven Humphrey  
 Mary and Paul Jendrucko  
 Shelly Johnson  
 Deborah Larson  
 Kathy and Jim Long  
 Loyal Lowrance  
 Roberta Mantooth  
 Erin McBride  
 James and Lori McLaughlin  
 Tanya Meyers  
 Cheryl Miller  
 Kasi O'Leary  
 Dawn O'Neill  
 David and Jeanne Oldenkamp  
 Anthony Perez  
 Matthew Pressley  
 Houk Reyden  
 John and Rose Sebastian  
 Craig Shawne  
 Bennett Smith  
 Jennifer Smith-Grady  
 Will Stevenson

## **Up to \$250**

Bobby Stone  
 Angel Torres  
 Todd Weeks  
 Stephen Workman  
 Richard Yorke  
 Wes Zimmer

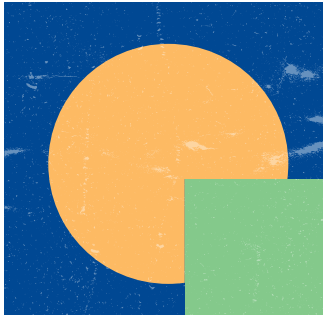


***We believe that every individual, regardless of their circumstances, deserves access to top-tier behavioral health care.***

***Thanks to YOUR generosity, we are fostering hope and building a stronger, healthier future for all.***







# North View

Peninsula Behavioral Health has embarked on a new housing project, North View, which is a 36-unit Permanent Supportive Housing project strategically situated at the corner of 2nd and Oak Streets in Port Angeles.

North View will provide long-term housing solutions for individuals and families experiencing chronic homelessness, disabilities, mental health challenges, and substance use disorders. Our commitment extends beyond mere accommodation, emphasizing the crucial link between stable housing and improved mental health outcomes, fostering a holistic approach to healthcare in our community.



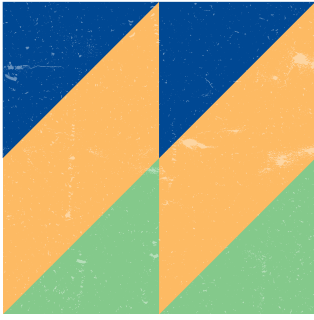
North View West facing facade at 2nd and Oak Street.

## Key Features of North View:

- **Unit Composition:** 7 studios, 25 one-bedroom, and 4 two-bedroom units.
- **Accessibility:** 5 units (4 one-bedroom and 1 studio) will be ADA accessible.
- **Community Amenities:** Office space for property management, a community room, rooftop terraces, bicycle storage, and a central laundry room with a dog wash sink.
- **Sustainability:** High-efficiency heat pumps, rooftop solar panels, EV charger, and adherence to Evergreen Sustainable Development Standards.
- **Scenic Views:** Rooftop terraces will offer residents stunning views of the Strait of Juan de Fuca and the Olympic Mountains.

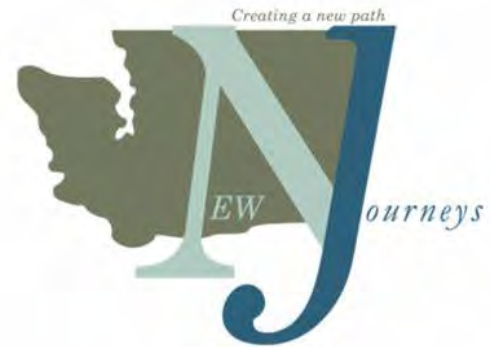


Southwest facing view.



# New Journeys Program at PBH

The **New Journeys** program offered through Peninsula Behavioral Health, in partnership with New Journeys Washington, is for individuals experiencing a first-episode of psychosis. Those who are eligible for the program and choose to participate are offered wrap around services including evidence-based psychotherapy, supported employment and education, peer support, case management, family education, and medication management.



New Journeys is for youth and adults between the ages of 15 to 40 years old. The person should have experienced symptoms of psychosis for more than or equal to 1 week and less than or equal to 2 years.

**What is psychosis?** Psychosis is a break with reality where the thoughts and perceptions of a person become disrupted. The onset of first episode psychosis typically presents in the teens and early 20's for males and the late 20's early 30's for females; it is unusual to see psychosis in children.

**Phases of Psychosis:** Psychosis occurs in 3 phases, Early, Acute and Recovery. The early phase can last anywhere from a few weeks to a year. Often the early signs of psychosis may be vague and attributed to a "phase" of adolescence because the typical characteristics of early psychosis are symptoms such as becoming socially withdrawn, experiencing loss of motivation, seeing a decline in performance in school or work and difficulties concentrating. These changes do not occur suddenly but happen gradually over the course of time.

**Recovery:** When you enter New Journeys program, you are given the opportunity to receive both individual resiliency therapy, as well as medication management, among other services to assist you in achieving recovery. While the pattern of recovery varies from person to person, psychosis is treatable, and recovery is expected.

New Journeys intake appointments are made by calling PBH at (360) 457-0431.



# 2024 Gala Highlights

Peninsula Behavioral Health hosted its annual Gala on May 2, 2024 featuring Keynote Speaker Sean Astin to a sold-out crowd at Field Arts and Events Hall. The theme of the Gala was “Creating Connections Beyond the Stigma.” THANK YOU to our generous sponsors who were instrumental in making this special event a success and in furthering our mission to provide quality, comprehensive behavioral health services to the residents of our community. The Gala brought together community leaders, supporters, and advocates, raising crucial funds for essential programs, including mental health services, substance use disorder treatments, and our efforts to provide affordable housing and support services for individuals and families facing homelessness.

## Gold Sponsors

- 7 Cedars Casino and Resort
- First Fed
- Wellpoint

## Silver Sponsors

- Dave Shreffler and Ann Soule
- Genoa Healthcare
- Jamestown S’Klallam Tribe
- Miller Construction
- Molina Healthcare
- North Olympic Healthcare Network
- Olympic Medical Center
- Platypus Marine
- United Healthcare

## Bronze Sponsors

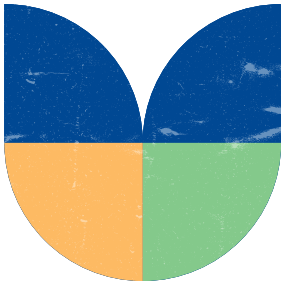
- Callis & Associates Insurance
- Community Health Plan of WA
- Dick Manning and Jen Gouge
- Maura Oakes and Roger Oakes
- Moss Adams
- Sky Island Party Rentals
- The University Group at Morgan Stanley



*Actor/director Sean Astin spoke about the importance of mental health. Astin’s mother, Patty Duke, served as PBH’s keynote speaker at its premier Gala.*







# 2025 Annual Gala

## Mindful Together: Strength in Community



**Join us for a magical night with an epic keynote on resilience and mental health by Tom Farley on Friday, May 2, 2025 at Field Arts and Events Hall!**

Tickets will be available for purchase starting January 1, 2025. Individual tickets are \$135 and include access to a keynote presentation by Tom Farley in the auditorium of Field Arts and Events Hall, followed by a Tri-Tip & Salmon Buffet Dinner and a silent auction. Doors open at 4:30 PM, with the keynote presentation beginning promptly at 5:15 PM.

### **About Keynote speaker, Tom Farley**

Tom Farley, our keynote speaker, grew up in Madison, Wisconsin, and graduated from Georgetown University. Tom's story is deeply rooted in resilience, family, and advocacy.

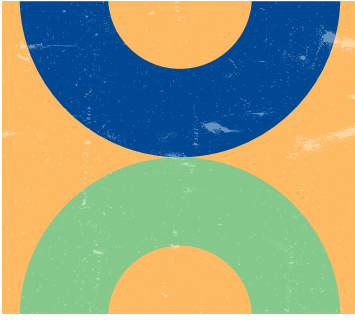
Growing up in a close-knit Irish Catholic family, Tom witnessed firsthand the impact of alcohol, which was a prominent part of his family's life and struggles. His own battle with substance use, as well as the tragic loss of his brother, actor/comedian Chris Farley, to addiction, became pivotal in shaping his mission to fight addiction stigma and support others in recovery.

In 1999, Tom founded The Chris Farley Foundation, a nationally recognized non-profit organization dedicated to substance abuse prevention. Using humor as a tool—much like his brother, the beloved comedian Chris Farley—Tom reached youth audiences with powerful, engaging messages on substance abuse. His bestselling biography, *The Chris Farley Show*, further cemented his impact, sharing insights into his brother's life and struggles.

As a motivational speaker, Tom delivers heartfelt and inspiring messages on addiction prevention and recovery, helping others navigate their paths to healing.

**A magical night you will always remember!**





# 2025 Gala Sponsorship

We invite you to be a part of something truly transformative - Peninsula Behavioral Health's Annual Gala. This extraordinary event isn't just about glitz and glamour; it's about changing lives, building stronger communities, and making a lasting impact!

At Peninsula Behavioral Health, we're on a mission to create a world where mental health is celebrated, not stigmatized. Our Annual Gala isn't just another gathering; it's our flagship fundraiser, and every dollar you contribute plays a pivotal role in the lives of countless individuals and families.

Together, we can break down the barriers that surround behavioral health challenges. Your partnership empowers us to create genuine community connections and erase the stigma that has held so many back for far too long.

All Sponsorship Packages include:

- Acknowledgment in marketing materials
- Recognition on social media posts
- Recognition on PBH website
- Inclusion in event program
- Signage at the event
- Recognition by event speakers from the podium



**\$20k**

**Title Sponsor**

- VIP table
- 8 VIP tickets
- Dedicated display at event
- 5 minutes to speak at podium



**\$10k**

**Platinum Sponsor**

- VIP table
- 8 VIP tickets
- Display at event



**\$5k**

**Gold Sponsor**

- VIP table
- 8 VIP tickets



**\$2.5k**

**Silver Sponsor**

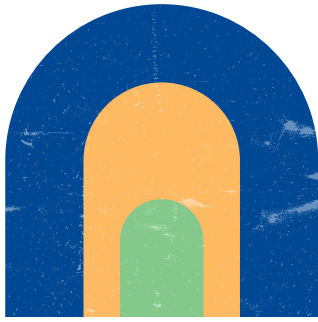
- 4 VIP tickets



**\$1.5k**

**Bronze Sponsor**

- 2 VIP tickets



# Show Your Support

Your support is vital to our mission of providing quality comprehensive behavioral health services to the residents of our community!

## YES! I WANT TO:

- RSVP for the May 2, 2025 Gala! Reserve \_\_\_\_\_ tickets at \$135 each!
- Reserve a VIP table for the May 2, 2025 Gala, \$1,500!
- JOIN THE LEGACY SOCIETY! Yes! I want more information on legacy gifting!
- I want to create a trust, providing for my loved ones, with a portion going to PBH.
- Make a One Time Gift                       \$25             \$250
- Make a Monthly Reoccurring Gift         \$50             \$500
- Make an Annual Reoccurring Gift         \$100         \$\_\_\_\_\_
- Make a Donation to the North View Project \$\_\_\_\_\_

Name: \_\_\_\_\_

Card #: \_\_\_\_\_

Expiration: \_\_\_\_\_ / \_\_\_\_\_ CSV#: \_\_\_\_\_ Zip: \_\_\_\_\_

Email: \_\_\_\_\_

Phone: \_\_\_\_\_

Street Address: \_\_\_\_\_

City/State/Zip: \_\_\_\_\_



By funding our work, you are reaching some of the most disadvantaged residents of our community and making a real difference in their lives. We are proud to serve our community, and your belief in our cause strengthens our commitment to helping those facing mental health and behavioral challenges. With partners like you, we can continue to make a lasting impact and improve the well-being of so many.

Thank you once again for your kindness and generosity!

Please send completed form to:  
 Development Department | dev@peninsulabehavioral.org | (360) 457-0431 ext. 531159  
 118 East 8th Street, Port Angeles, WA 98362

**PENINSULA BEHAVIORAL HEALTH**  
**118 E. 8TH STREET**  
**PORT ANGELES, WA 98362**

NONPROFIT ORG  
U.S. POSTAGE  
PAID  
OLYMPIC MAILING  
SERVICES

☎ 360-457-0431

✉ [dev@peninsulabehavioral.org](mailto:dev@peninsulabehavioral.org)

🌐 [www.PeninsulaBehavioral.org](http://www.PeninsulaBehavioral.org)

📘 [www.facebook.com/PeninsulaBehavioralHealthWA](https://www.facebook.com/PeninsulaBehavioralHealthWA)

📷 [www.instagram.com/PeninsulaBehavioralHealth](https://www.instagram.com/PeninsulaBehavioralHealth)

